



## 3D DIORAMA



1



CUT

2



SCORE

3



GLUE

### GETTING STARTED

\* Cut out all pieces along the solid lines. Don't forget to keep the tabs on the cutouts - you'll need them to glue pieces together.

\* Fold all pieces upward or downward along score lines.

MOUNTAIN FOLD



VALLEY FOLD

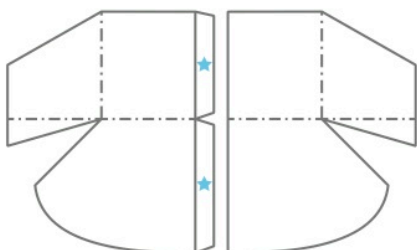


## INSTRUCTIONS

### TRACK

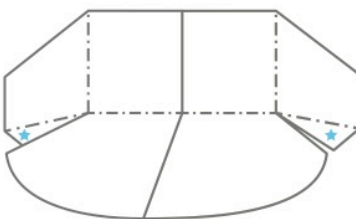
1

Glue LEFT TRACK to RIGHT TRACK with tabs 1 & 2.



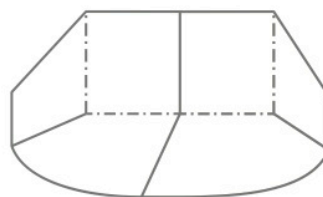
2

Now glue tabs 3 & 4 under the track.



3

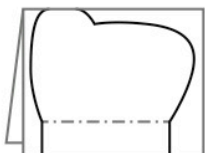
The TRACK is now ready for some racers!



### CHARACTERS

1

Fold the character in half and cut along the solid black edge.



2

Fold bottom tabs out for base. Glue together. Do not glue bottom tabs.



3

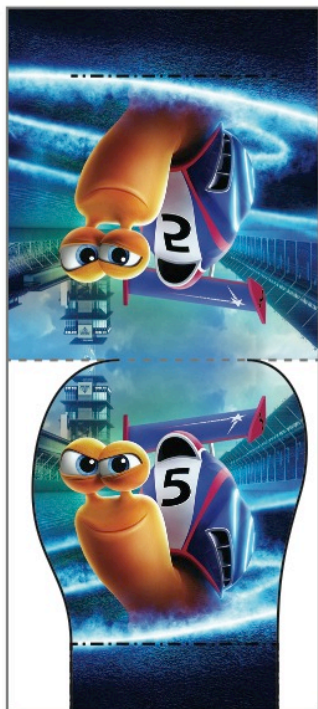
Repeat these steps to make each character. Now the DIORAMA is complete!





**3D DIORAMA**

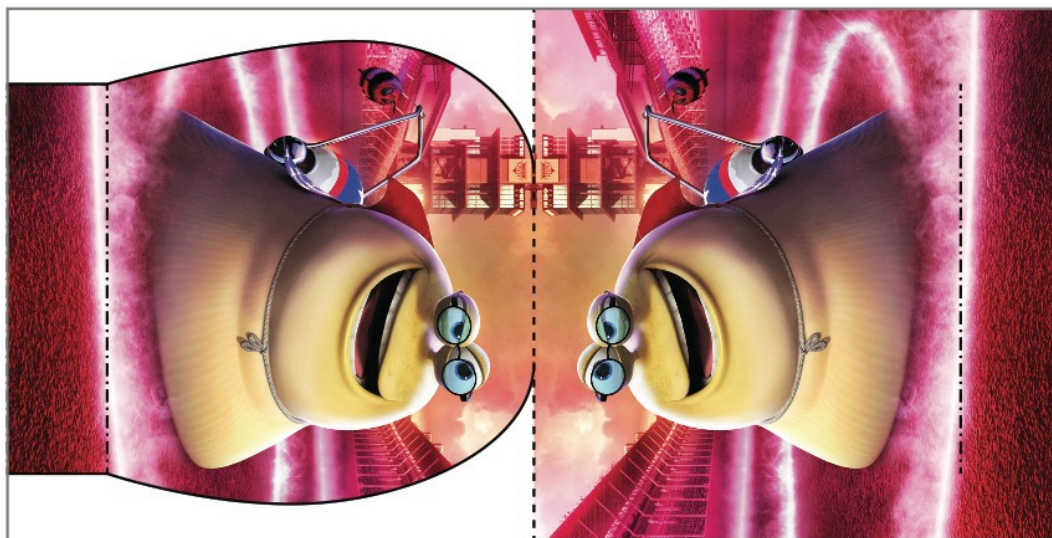
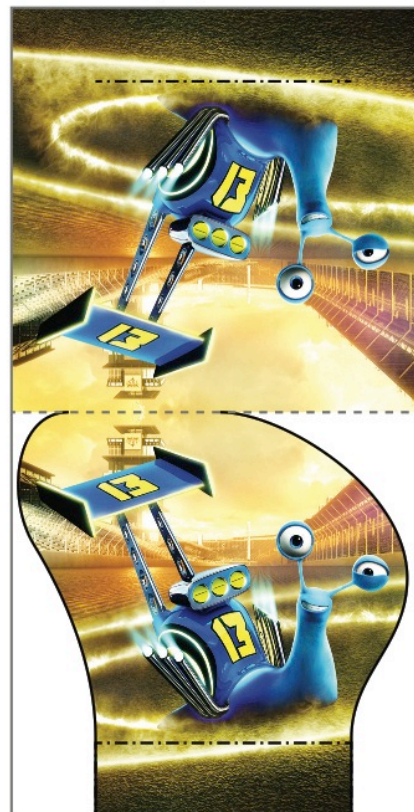
TURBO



BURN



SKIDMARK



WHITE SHADOW

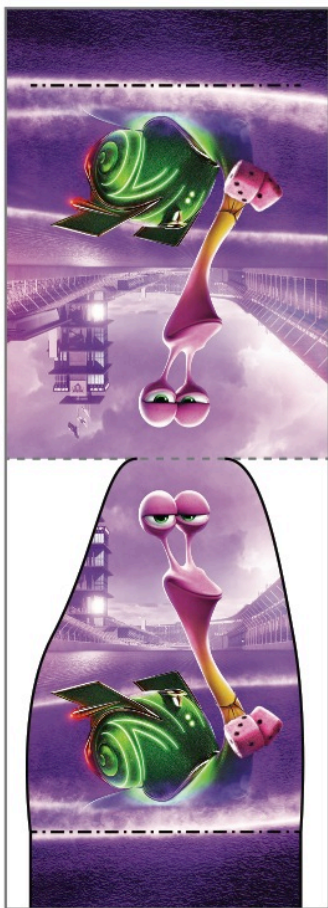


DREAMWORKS  
**TURBO**

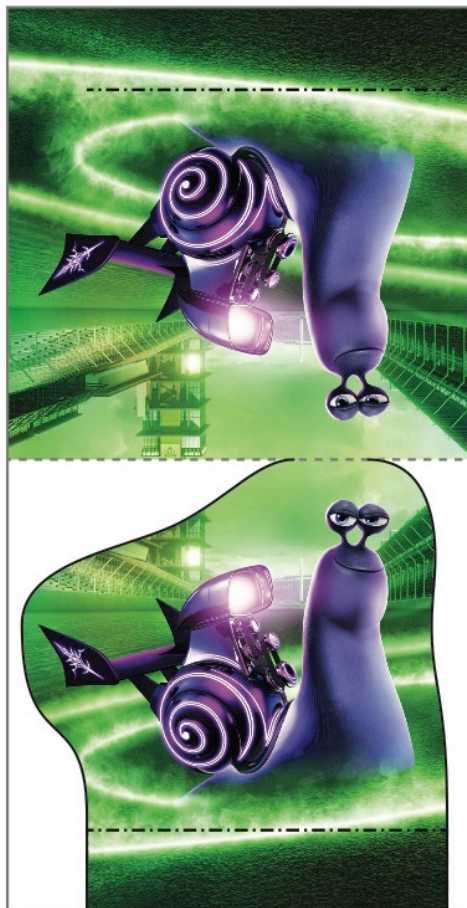


**3D DIORAMA**

SMOOVE MOVE



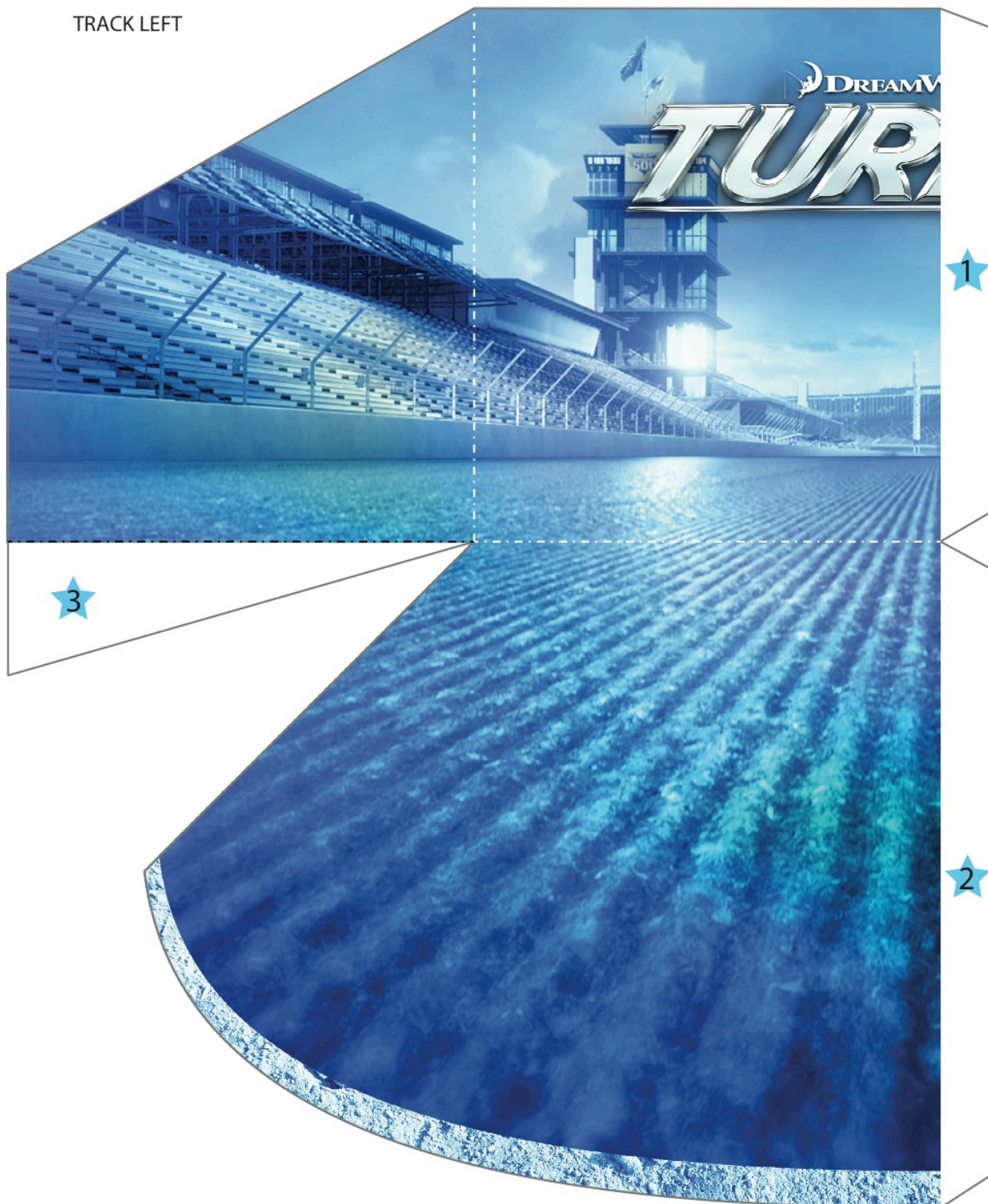
WHIPLASH





**3D DIORAMA**

TRACK LEFT



DreamWorks Turbo © 2013 DreamWorks Animation LLC. All Rights Reserved.

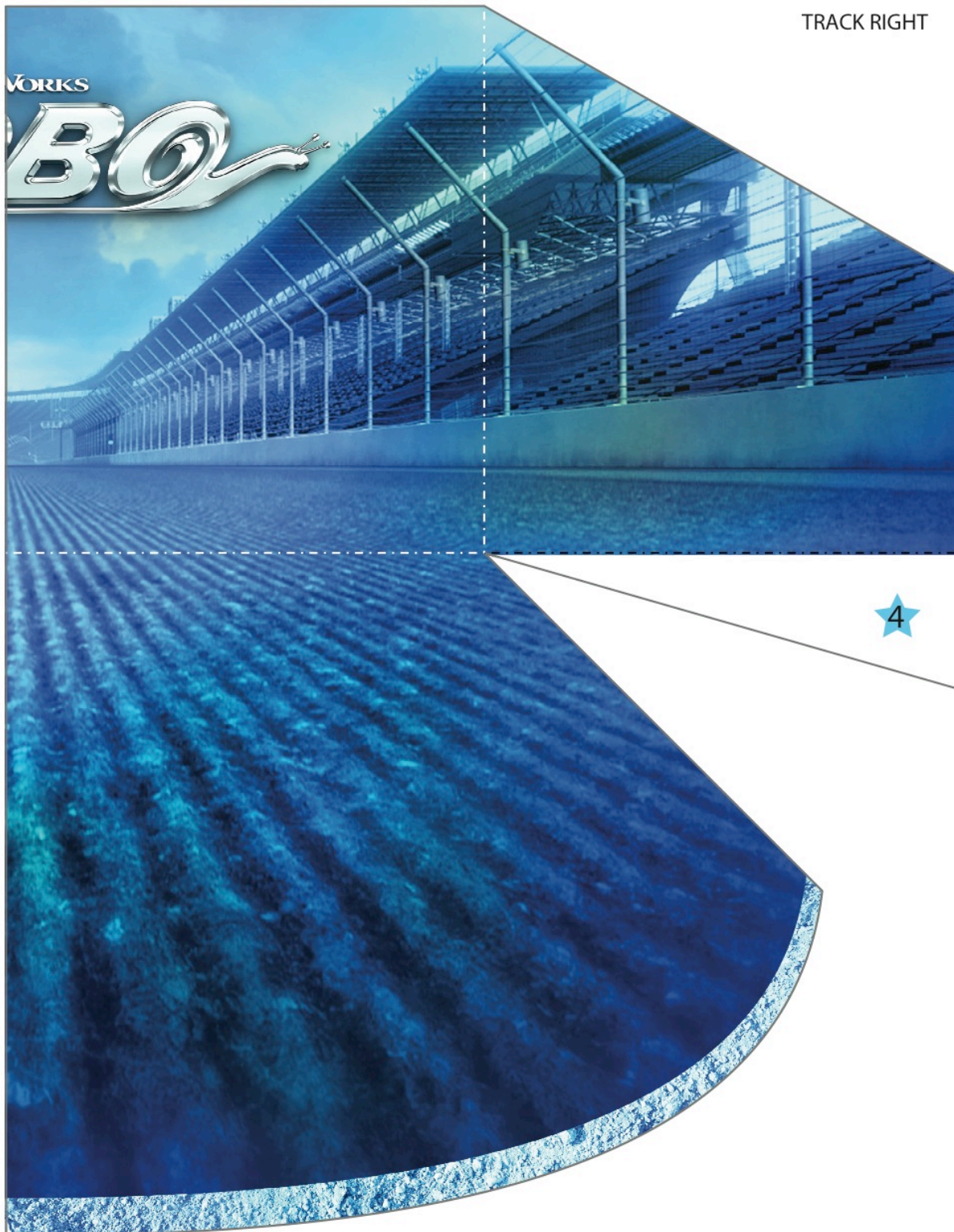






**3D DIORAMA**

TRACK RIGHT



DreamWorks Turbo © 2013 DreamWorks Animation LLC. All Rights Reserved.

